

Supplementary Material for:

**Analysis of Temperature Distribution in PV-integrated
Electrochemical Flow Cells**

Dorian Santander, Shaun Whitley, Jungmyung Kim, Dowon Bae*

*Institute of Mechanical, Process and Energy Engineering, School of Engineering and Physical Sciences, Heriot-Watt University

*Corresponding author – d.bae@hw.ac.uk

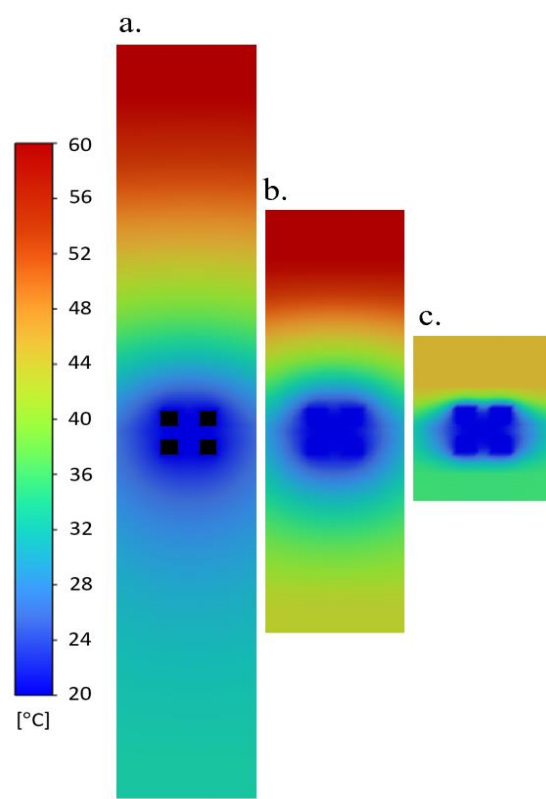


Figure S1. Temperature profile for a flow 70 ml/min flow rate, for different graphite thicknesses: a) 20 mm, b) 10 mm and 2 mm.